

WESAN[®] cold

WOLTMAN cold water meters for high flowrates

The Woltman Wesan[®] meter is designed to meter volumes of water (max. temp. 50°C) in main piping and water supply systems.

It is marketed in two versions:

- Wesan[®] P : the impeller centre line is parallel to the piping to keep down the head loss in the Wesan P meter (less than 0.1 bar at Q_{max}).

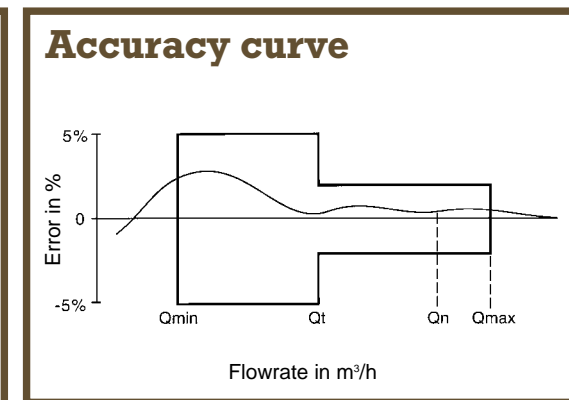
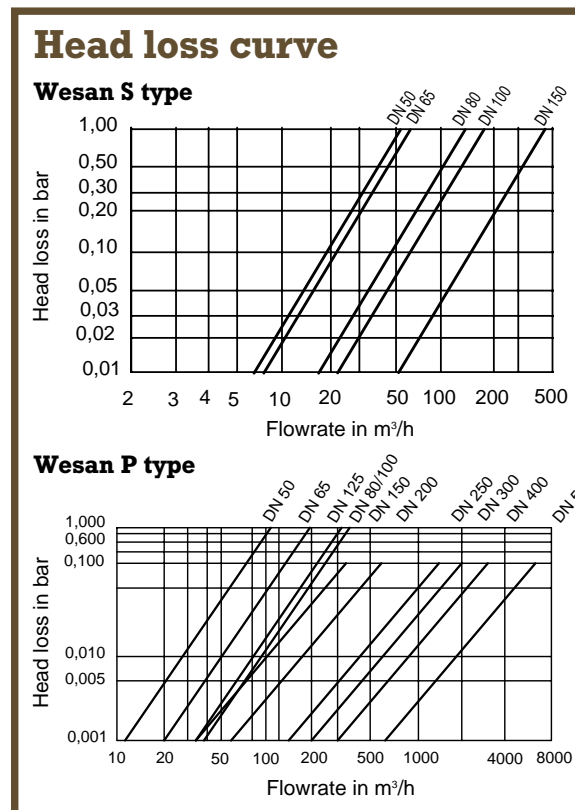
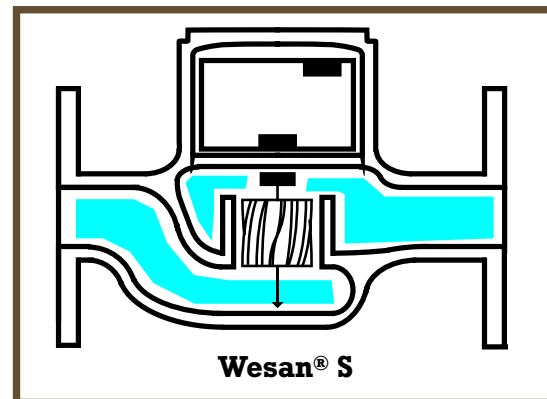
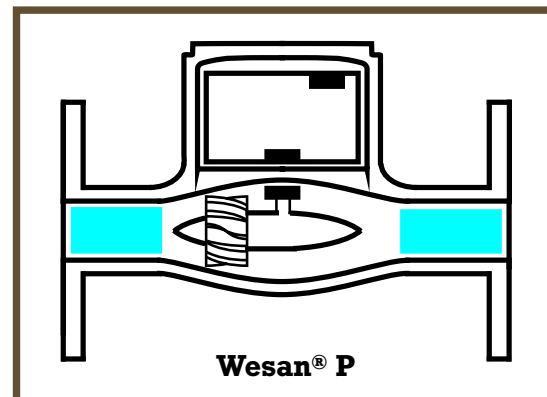
- Wesan[®] S : the impeller is suspended with its centre line perpendicular to the piping, making the Wesan S meter specially sensitive to low flow rates.

In both versions, the measuring chamber can be replaced without removing the meter from the pipe.

Wesan[®] meters are modular and may be fitted with a Pulsar series pulse emitter at all times.

In that way, they can be equipped with Izar[®] radio reading systems, Draco[®] dosing systems or Cursa[®] consumption analysis systems.

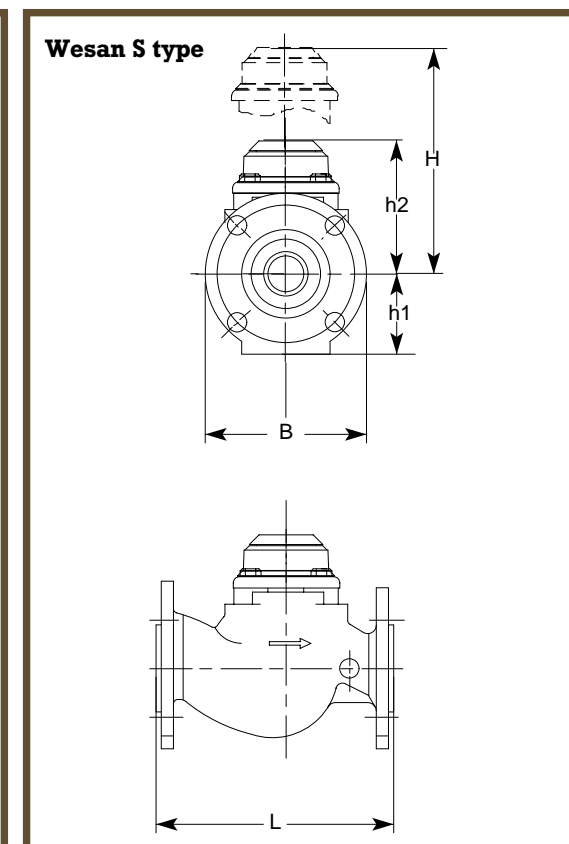
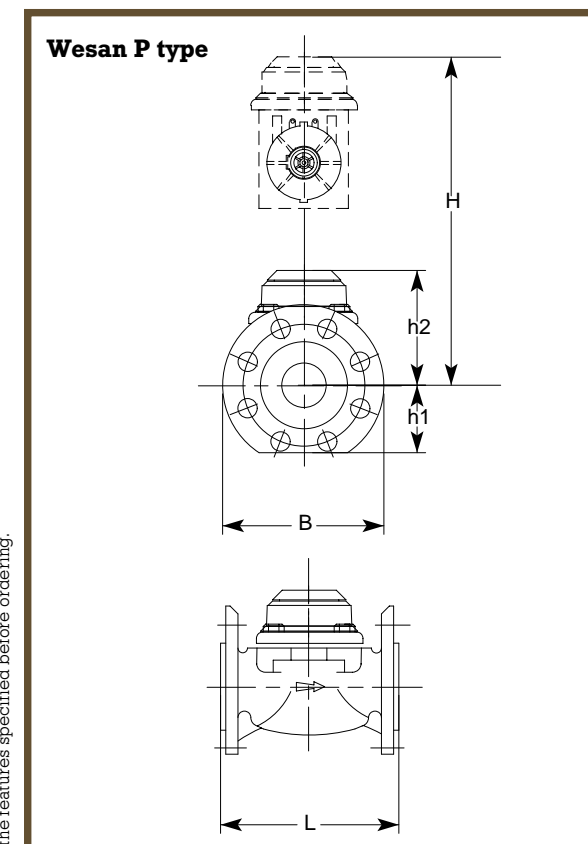
Wesan[®] meters can also be connected to Calec or Pallas air-conditioned thermal energy calculators.



Straight lengths recommended

Before the meter	3 DN
After the meter	No sudden reduction in the diameter of the piping after the meter

Dimensions (see table in the central pages)



Non contractual document. Please have the features specified before ordering.

Distributed by :

If you have any question, please do not hesitate to contact us :



HEAD OFFICE B.P. 160 - 67 rue du Rhône - 68304 Saint-Louis Cedex - France
Tel. +33 (0)3.89.69.54.00 - Fax +33 (0)3.89.69.72.20
Web: www.sappel.com - E-mail: info@sappel.com

EXPORT B.P. 160 - 67 rue du Rhône - 68304 Saint-Louis Cedex - France
Tel. +33 (0)3.89.69.54.21 - Fax +33 (0)3.89.69.54.22
E-mail: export@sappel.com

Imprimerie P. BIELER S.A. - 68330 Huningue

Woltman Wesan P cold Technical characteristics

Designation	Wesan P						
Nominal diameter mm	50	65	80	100	125	150	200

Measuring range (m³/h)

Max. constructor's flowrate	90	120	200	300	350	600	1200
Permanent flowrate	35	50	120	180	180	250	350
Max. approved flowrate	30	50	80	120	200	300	500
Nominal flowrate	15	25	40	60	100	150	250
Transition approved flowrate	3	5	8	12	20	30	50
Transition constructor's flowrate	1	1.2	2	2	2	12	12
Min. approved flowrate	0.45	0.75	1.2	1.8	3	4.5	7.5
Min. constructor's flowrate horizontal	0.3	0.45	0.5	0.6	0.6	2.5	4
vertical (* class A)	0.5*	1*	1.2	1.2	1.2	4.5	6.8
Start flowrate	0.09	0.13	0.22	0.25	0.25	1.7	1.8
Indication range m ³	999 999				9 999 999		

Pulse emitter Pulsar

Pulse weight	10 liters	100 liters
--------------	-----------	------------

EEC approval

Class	B-H / A-V	B	B-H
Approval number		D 95 6.132.35	

Head loss

Kvs	100	200	380	380	330	1000	2000
Δp bar	= Q ² / Kvs ² with Q in m ³ /h						

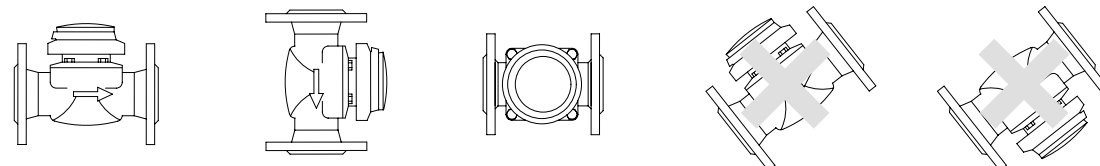
Temperatures and pressure

T. min. and max.	from 0°C to +50°C						
Nominal pressure bar	16						

Dimensions, weight and connections (see dimension diagrams on the following page)

Lenght L mm	200	200	200/225	250	250	300	350
Width B mm	165	185	200	220	250	285	340
Height h1 mm	75	83	94	106	118	135	163
Height h2 mm	123	123	140	140	140	212	212
Height H mm	220	220	260	260	260	440	440
Weight kg	10.2	11.2	14.1	19.4	20.5	32.5	45
Connection	Flange with flat face PN 16						Flange PN 10/16 flat face
Special versions	SCU (without copper alloys), on request only						

Recommended installation positions



Woltman Wesan S cold Technical characteristics

Designation	Wesan S				
Nominal diameter mm	50	65	80	100	150

Measuring range (m³/h)

Max. constructor's flowrate	50	50	110	180	350
Permanent flowrate	20	25	55	90	200
Max. approved flowrate	30	50	80	120	300
Nominal flowrate	15	25	40	60	150
Transition approved flowrate	4.5	5	8	12	30
Transition constructor's flowrate	1.5	2	2.5	3	10
Min. approved flowrate	0.45	0.75	1.2	1.8	4.5
Min. constructor's flowrate	0.15	0.2	0.2	0.3	0.8
Start flowrate	0.06	0.06	0.09	0.09	0.4
Indication range m ³	999 999			9 999 999	

Pulse emitter Pulsar

Pulse weight	10 liters	100 l.
--------------	-----------	--------

EEC approval

Class	B horizontal position	
Approval number	D 95 6.132.37	D 86 6.132.21

Head loss

Kvs	60	70	130	220	500
Δp bar	= Q ² / Kvs ² with Q in m ³ /h				

Temperatures and pressure

T. min. and max.	from 0°C to +50°C				
Nominal pressure bar	16				

Dimensions, weight and connections

Lenght L mm	270	300	300	360	433/500
Width B mm	165	185	200	220	285
Height h1 mm	85	97	102	113	141
Height h2 mm	135	135	180	190	351
Height H mm	320	332	427	448	756
Weight kg	14.5	17.7	25.5	31.5	79.5
Connection	Flange with flat face PN 16				

Recommended installation position

