



SH  
MH  
WMH



Multi-jet model **MH**



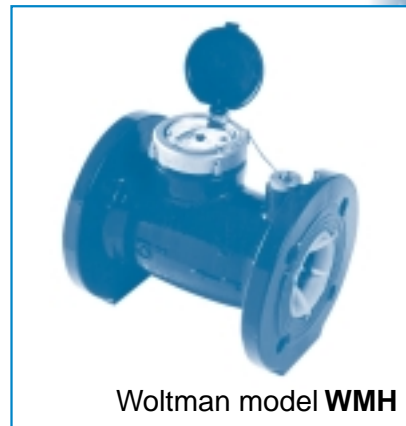
Single-jet model **SH**

**Description  
& Features:**

All dimensions and other features (like magnetic drive, electronic output options, types of registers, etc.) correspond to the relevant cold water models S, M, WM.

**Sizes:**

SH - 1/2" threaded.  
MH - 1/2" - 2" threaded.  
WMH - 2"(50mm) - 8"(200mm) flanged.



Woltman model **WMH**

**TECHNICAL SPECIFICATIONS:**

**Maximum working  
pressure:**

SH & MH - 10 bar  
WMH - 16 bar

**Max working  
temperature:**

90°C

**Body:**

SH & MH - corrosion proof copper alloy  
WMH - Polyester coated cast iron

**Flanges:**

ISO, BS, AWWA (other - optional)

**More information:**

See relevant leaflets - S, M, WM

**INSTALLATION REQUIREMENTS:**

**SH & MH**

(single-jet & multi-jet): • Dial face Horizontal.

**WMH (woltman):**

- The water meter may be installed in any position. For non-horizontal position the flow shall be upwards.
- Straight pipe section of the same diameter D as the meter, having lengths of 10D and 5D shall be installed upstream and downstream of the meter, respectively.

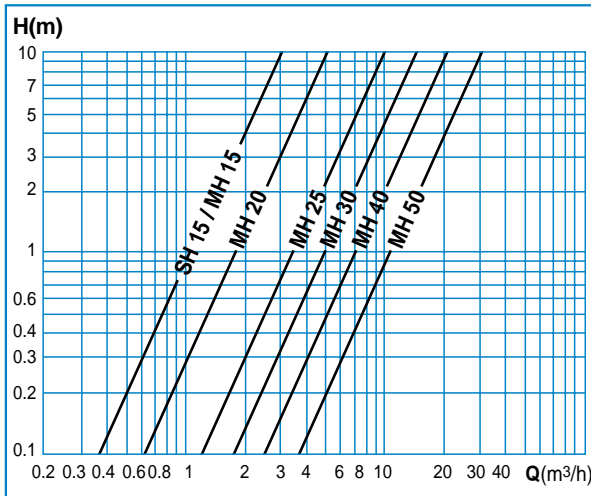




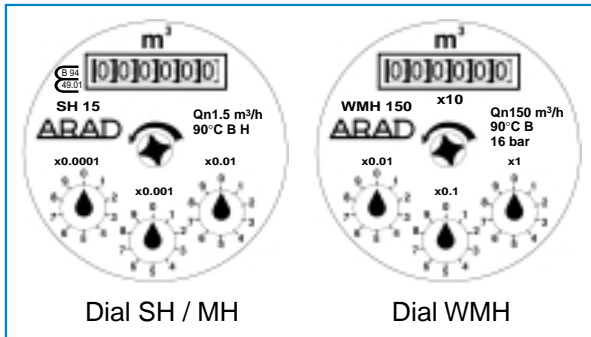
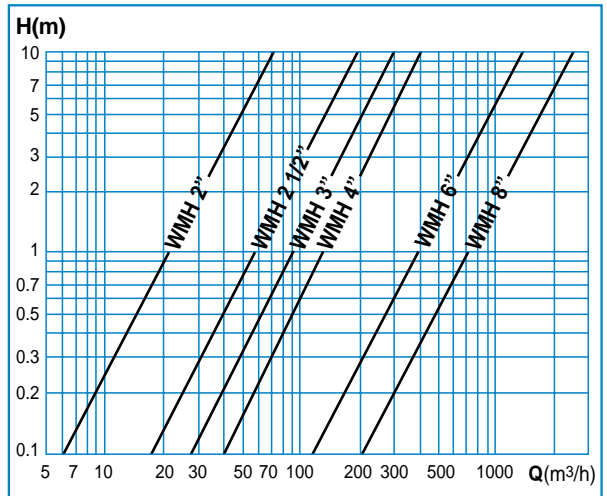
# PERFORMANCE DATA

Models		mm	SH	MH							WMH					
			15	15	20	25/7	25/10	30	40	50	50	65	80	100	150	200
Nominal sizes		inch	1/2	1/2	3/4	1	1	1 1/4	1 1/2	2	2	2.5	3	4	6	8
Permissible peak load for short periods	Qmax	m <sup>3</sup> /h	3	3	5	7	10	12	20	30	40	100	130	235	520	875
Nominal flow rate	Qn	m <sup>3</sup> /h	1.5	1.5	2.5	3.5	5	6	10	15	15	25	40	60	150	250
Permanent flow rate	Qp	m <sup>3</sup> /h	-	-	-	-	-	-	-	-	20	40	55	100	215	365
Lowest flow rate measured within ±3%	Qt	m <sup>3</sup> /h	0.12	0.12	0.2	0.28	0.4	0.48	0.8	3	2	2	2.2	2.5	7	8
Lowest flow rate measured within ±5%	Qmin	m <sup>3</sup> /h	0.03	0.03	0.05	0.07	0.1	0.12	0.2	0.45	0.45	0.75	1.2	1.5	4.5	5
Starting flow		m <sup>3</sup> /h	0.012	0.012	0.017	0.02	0.025	0.03	0.05	0.15	0.15	0.3	0.3	0.5	1.5	1.5
Smallest readable unit		lit	0.1	0.1	0.1	0.1	0.1	0.1	1	1	1	1	1	10	10	100
Maximum register capacity		m <sup>3</sup>	10 <sup>5</sup>	10 <sup>5</sup>	10 <sup>5</sup>	10 <sup>5</sup>	10 <sup>5</sup>	10 <sup>5</sup>	10 <sup>6</sup>	10 <sup>6</sup>	10 <sup>6</sup>	10 <sup>6</sup>	10 <sup>6</sup>	10 <sup>7</sup>	10 <sup>7</sup>	10 <sup>8</sup>

## HEAD LOSS CURVES MH/SH



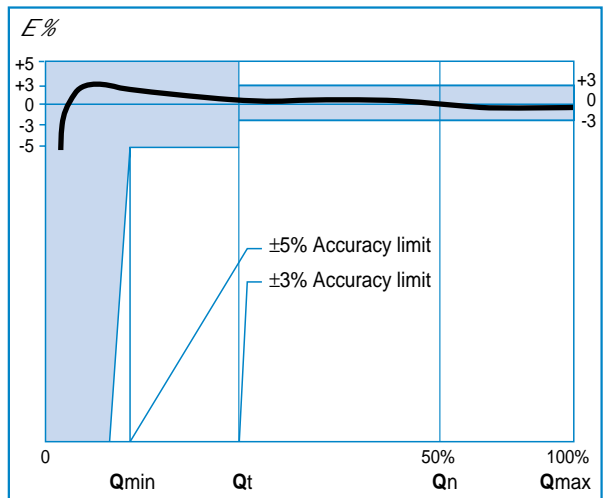
## HEAD LOSS CURVES WMH



Dial SH / MH

Dial WMH

## ACCURACY CURVE



TD-148 9:00 SH / MH / WMH



ARAD LTD. DALIA

WATER MEASURING TECHNOLOGIES