



# ARAD LTD. DALIA - WATER METERS DIVISION

## MULTI-JET - WATER METER MODEL M

# M



M



MF 2"

### Description:

Water meters using the multi-jet principle are the best cost/performance, long life, flow measurement instruments. Wide clearances in the measuring chamber and negligible area of contact between static and moving parts are the main reasons for the high reliability of this design even in hard water.

### Features:

- Only one moving part - the impeller - in contact with the water for minimum wear and utmost reliability.
- Magnetically driven sealed registers. Stainless steel/glass encapsulated option is unconditionally guaranteed against fogging.
- Wide selection of dial configurations (3 pointers; central pointer), units of measurements and different options of electrical output.

### Application:

For domestic, agriculture and industrial use.

### Standards:

ISO 4064, AWWA, C 708, SI 63

### Available Sizes:

Model M - 1/2" - 2" (15mm - 50mm).  
Model MF - 2" (50mm) flanged.

## TECHNICAL SPECIFICATION:

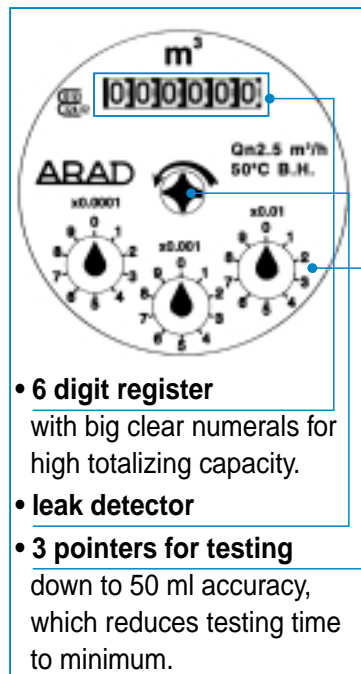
**Maximum working pressure:** 10 bar

**Maximum working temperature:** 50°C

**Body:** Corrosion proof copper alloy.

## INSTALLATION REQUIREMENTS:

- Dial face - Horizontal.



- **6 digit register** with big clear numerals for high totalizing capacity.
- **leak detector**
- **3 pointers for testing** down to 50 ml accuracy, which reduces testing time to minimum.



ARAD LTD. DALIA

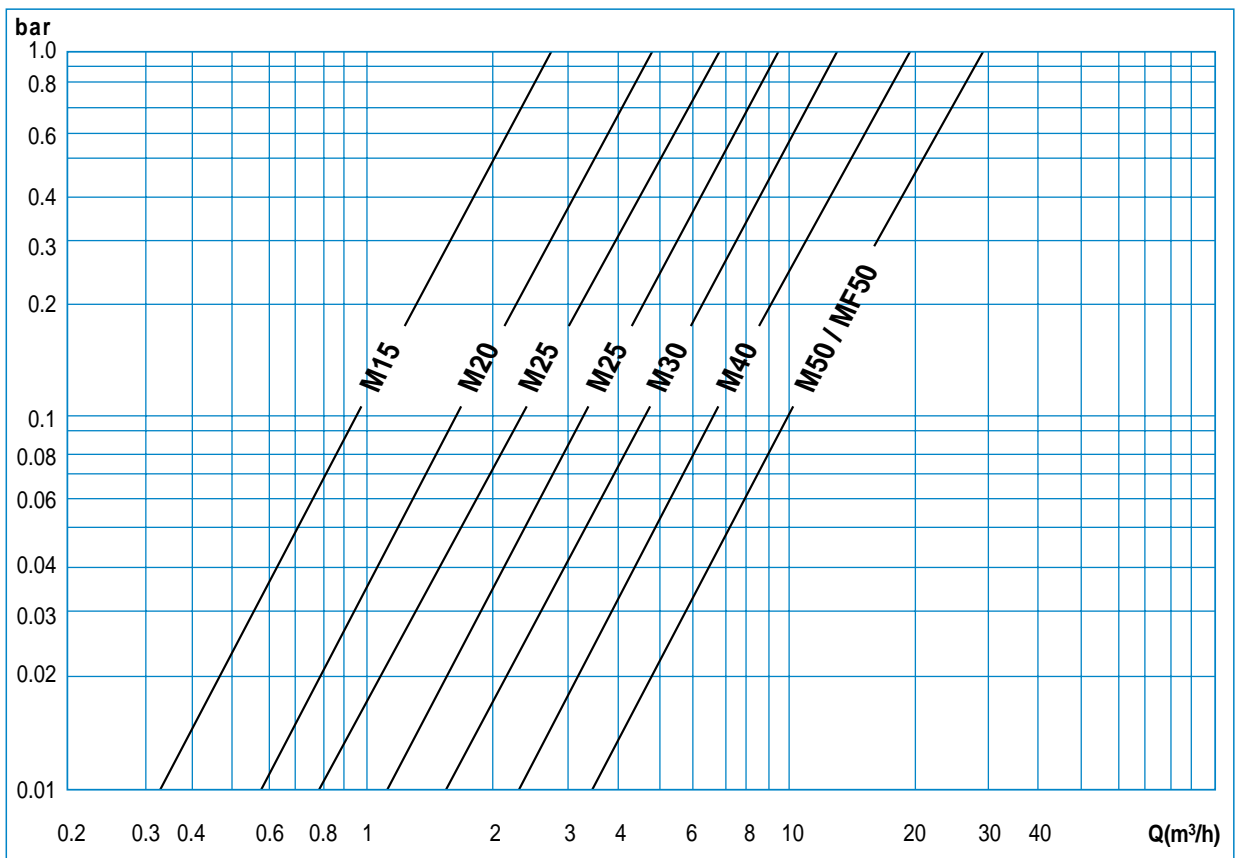
WATER MEASURING TECHNOLOGIES



## PERFORMANCE

Model			M15	M20	M25/7	M25/10	M30	M40	M50 MF50
<b>Nominal size</b>		inch	1/2"	3/4"	1"	1"	1 1/4"	1 1/2"	2"
<b>Maximum flowrate</b>	Qmax	m <sup>3</sup> /h	3	5	7	10	12	20	30
<b>Nominal flowrate</b>	Qn	m <sup>3</sup> /h	1.5	2.5	3.5	5	6	10	15
<b>Transitional flowrate</b>	Qt	l/h	120	200	280	400	480	800	3000
<b>Minimum flowrate</b>	Qmin	l/h	30	50	70	100	120	200	450
<b>Accuracy between</b>	Qmax and Qt		±2%	±2%	±2%	±2%	±2%	±2%	±2%
<b>Accuracy between</b>	Qt and Qmin		±5%	±5%	±5%	±5%	±5%	±5%	±5%
<b>Headloss at Qmax</b>		bar	1	1	1	1	1	1	1
<b>Maximum register capacity</b>		m <sup>3</sup>	10 <sup>5</sup>	10 <sup>5</sup>	10 <sup>5</sup>	10 <sup>5</sup>	10 <sup>5</sup>	10 <sup>6</sup>	10 <sup>6</sup>
<b>Minimum register capacity</b>		lit	0.1	0.1	0.1	0.1	0.1	1	1

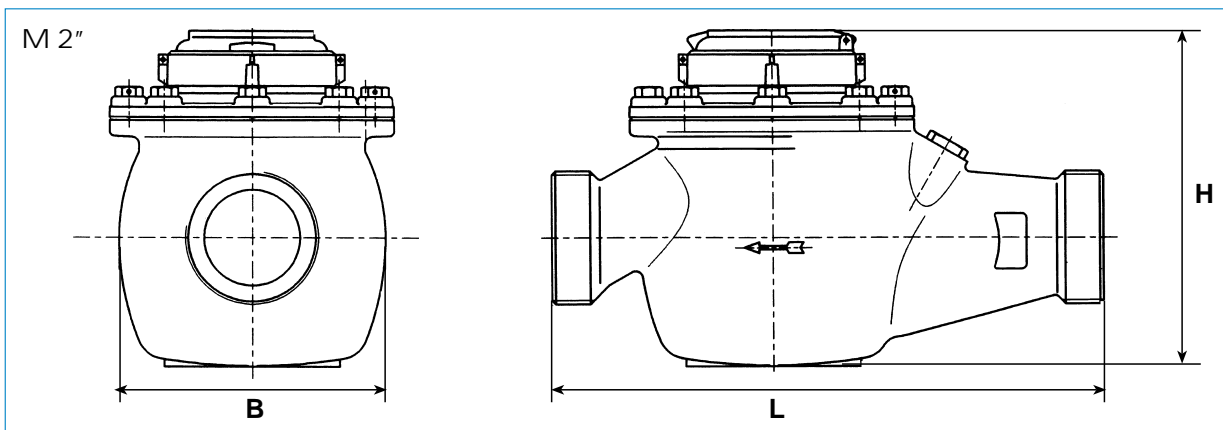
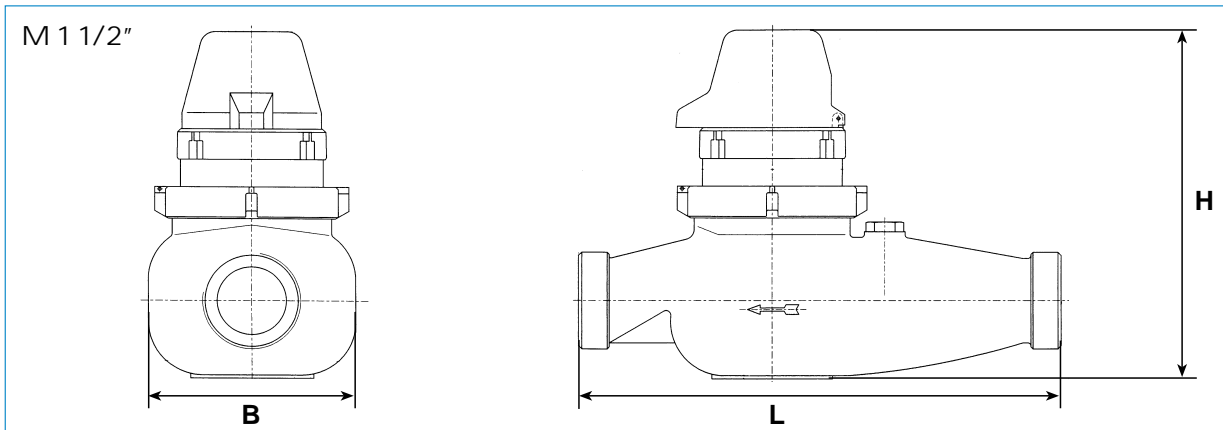
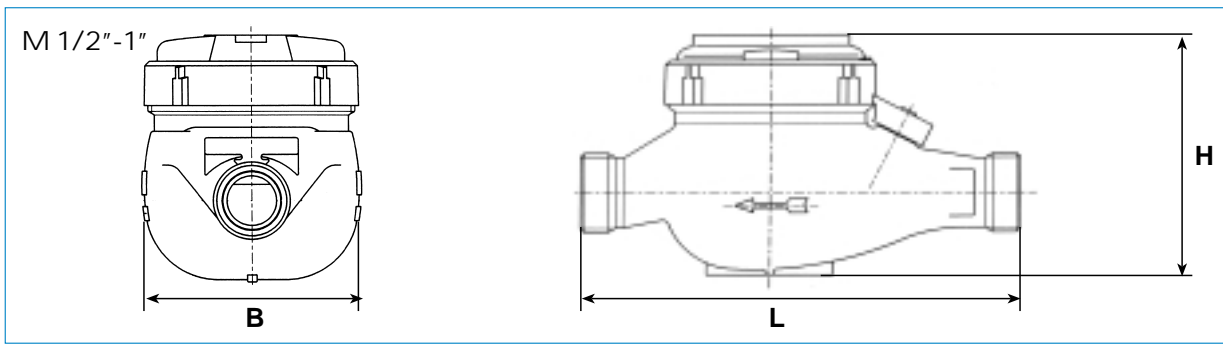
## HEAD LOSS CURVE





# D I M E N S I O N S

Model		M							MF
Nominal size	mm	15	15	20	25	30	40	50	50
	inch	1/2"	1/2"	3/4"	1"	1 1/4"	1 1/2"	2"	2"
L - Length without tail pieces	mm	165	190	190	260	260	300	300	270
L - Length with tail pieces	mm	260	285	285	375	375	435	460	
B - Width	mm	95	95	95	105	105	125	160	165
H - Height	mm	108	108	108	108	108	170	190	193
Weight	kg	1.9	2	2	2.8	2.8	6.8	10.3	13.4





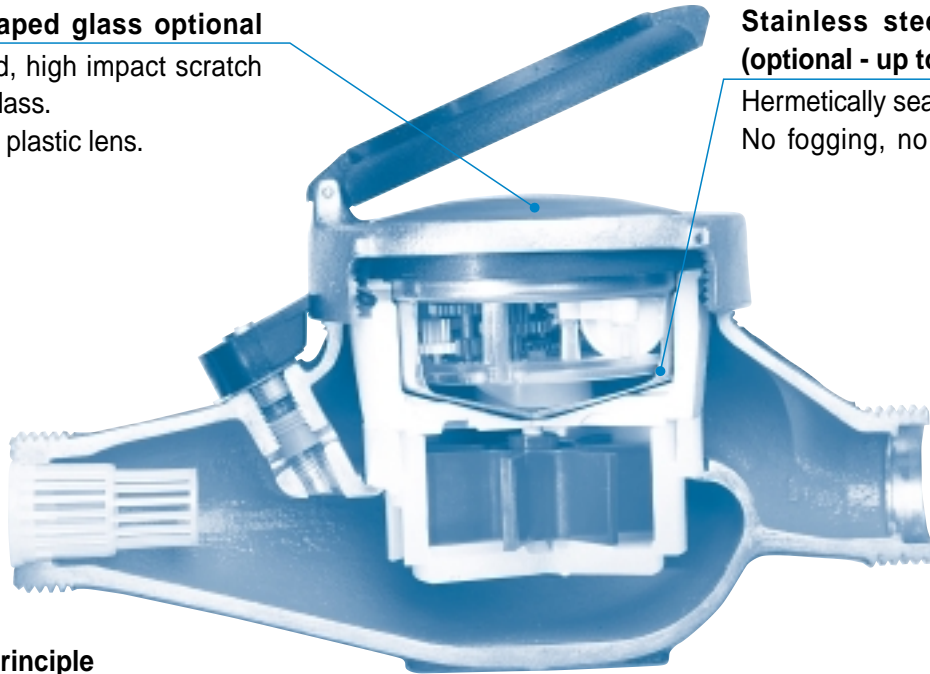
## CUT-AWAY 1/2" - 1 1/4"

### Dome shaped glass optional

Toughened, high impact scratch resistant glass.  
Standard - plastic lens.

### Stainless steel capsule (optional - up to 1")

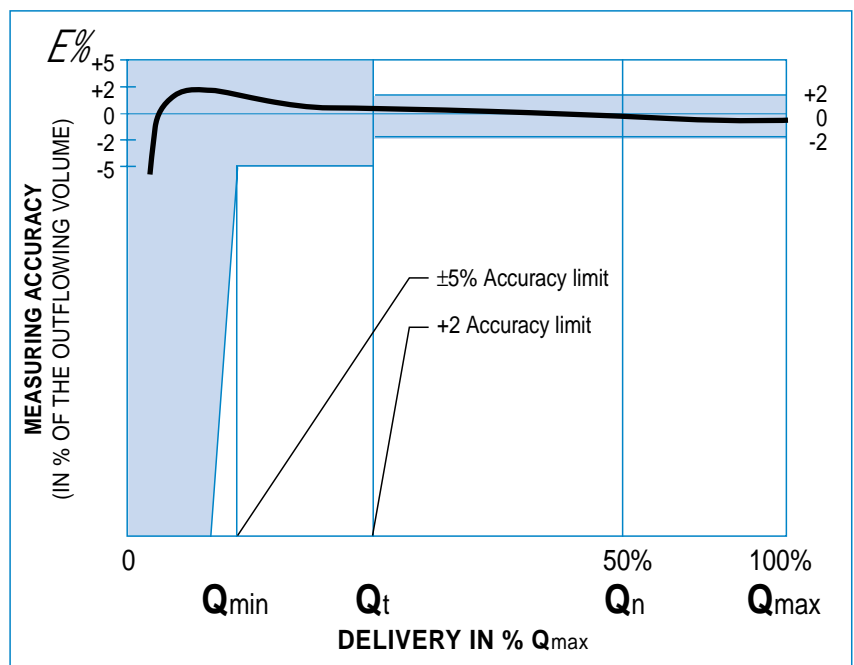
Hermetically sealed register.  
No fogging, no tampering.



### Multi-jet principle

Assures an equally distributed load on the impeller, thereby minimizing wear and maintaining accuracy. The measuring unit is built with wide clearances to allow sand and other impurities to pass through the meter without affecting its performance.

## ACCURACY CURVES



TD-113 9.00M



ARAD LTD. DALIA

WATER MEASURING TECHNOLOGIES